

4. Disassembling guide

Note:

(1) Before take apart inverter, please confirm all power cords are disconnected!

(2) The guide as below is only for reference, for the figures as below may not be exactly the same with the version in your hand. Please notice the difference and follow your original version.

Remove the 12 pcs of screws on the case.



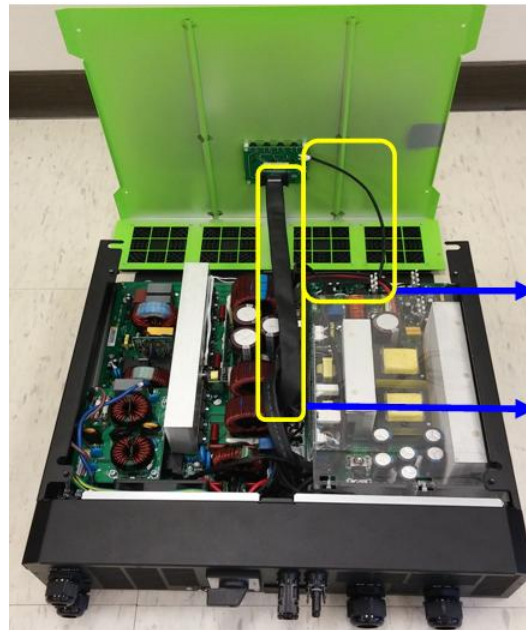
SERVICE MANUAL

Hybrid inverter

Open the top cover carefully, and remove 2 cables on it.

One wire is connected to CN6 (on DC/DC board).

The other wire is connected to CN10 (on CNTL board).



This wire connects to CN6 on DC/DC board.

This wire connects to CN10 on CNTL board.

Take off the top cover and wiring cover.



Wiring cover

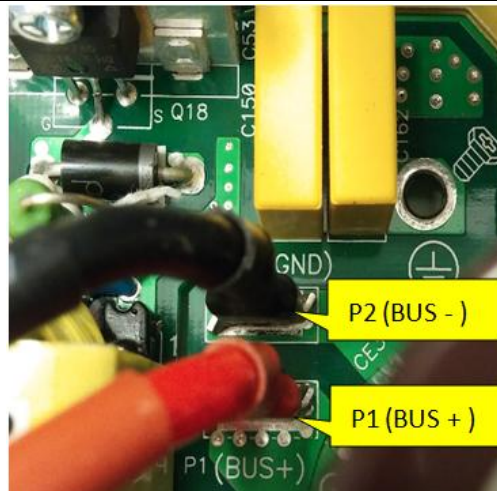


(a) Discharge the BUS capacitors :

Use the **100ohm/5W resistor** to discharge, the position is P1 and P2 terminals.

(b) Discharge Battery input capacitors:

The position is BAT+ and BAT- terminals. The discharge time is 10 seconds.

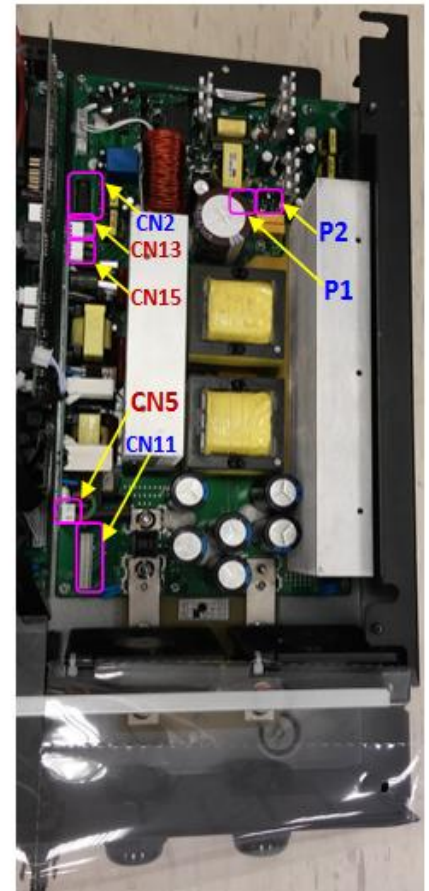
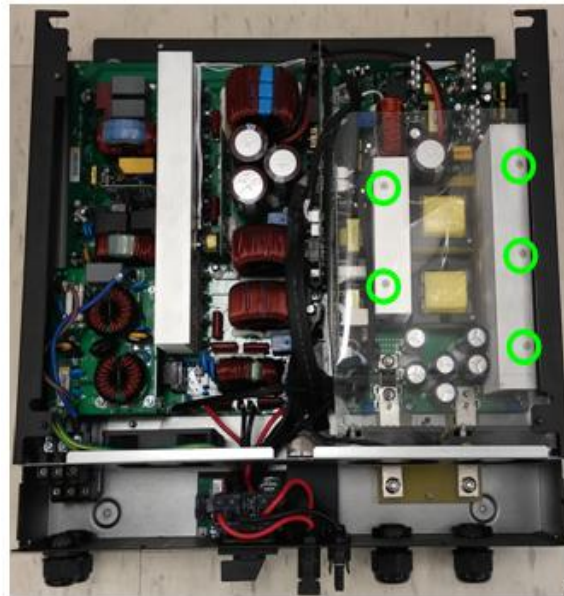


- The usable "Discharge resistor" is: 500 ~50 Ω , 3 watts or more.

Remove the 5 plastic screws on heat sink.

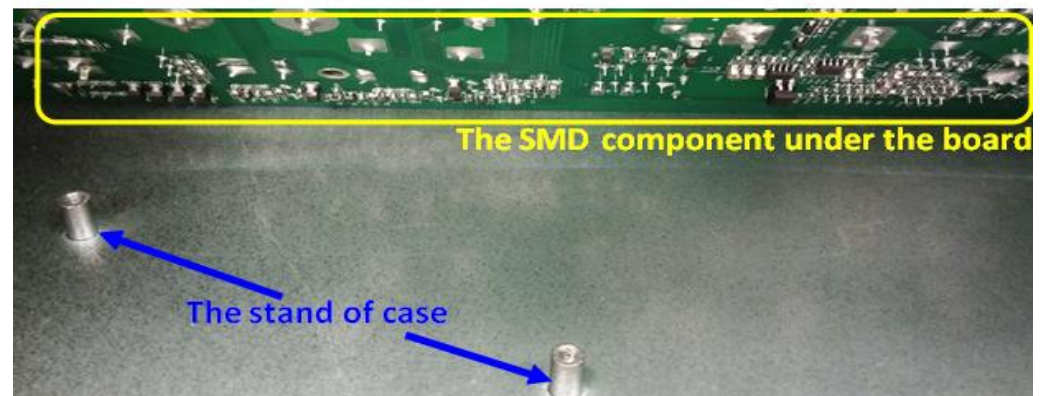
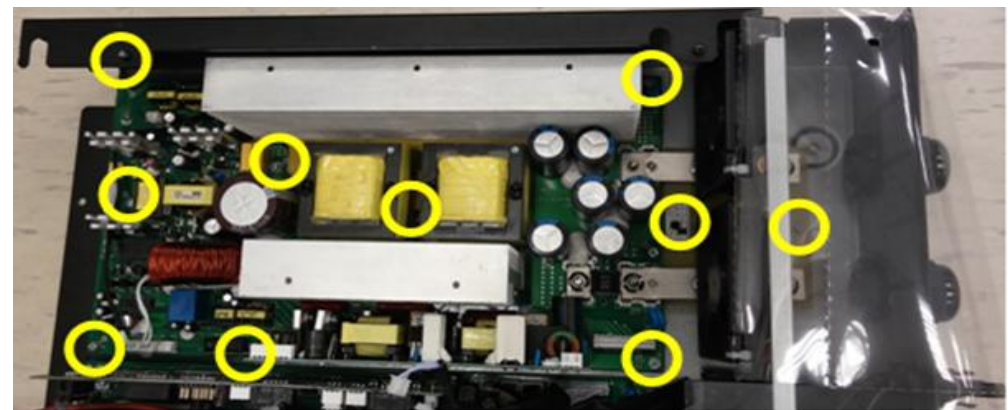
Remove the cables on DC/DC and SPS board:
which connect to
CN2, CN11 ,P1, P2
(on DC/DC board)
and CN5,CN13,CN15
(on SPS board)

**Note: There is the glue on the terminal.
Please remove the glue carefully.
Do not unplug the cables fiercely,
unless the cables will be damaged.**



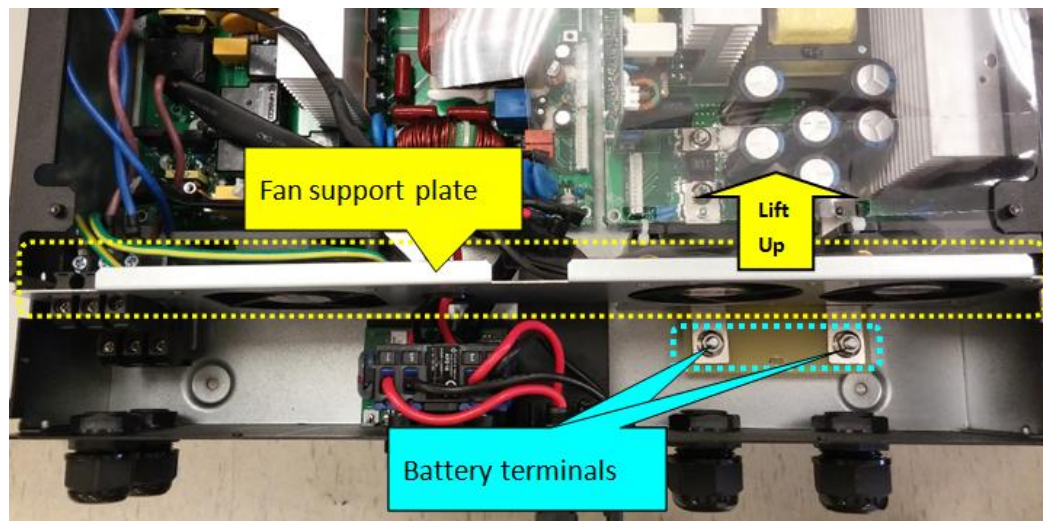
Remove the 10 pcs of screws on DC/DC board shown in the figure.

**Note: When you attempt to take out the board, please be careful about prevent damaging the SMD components under the board!
Especially prevent from SMD components be hit to damage by the**

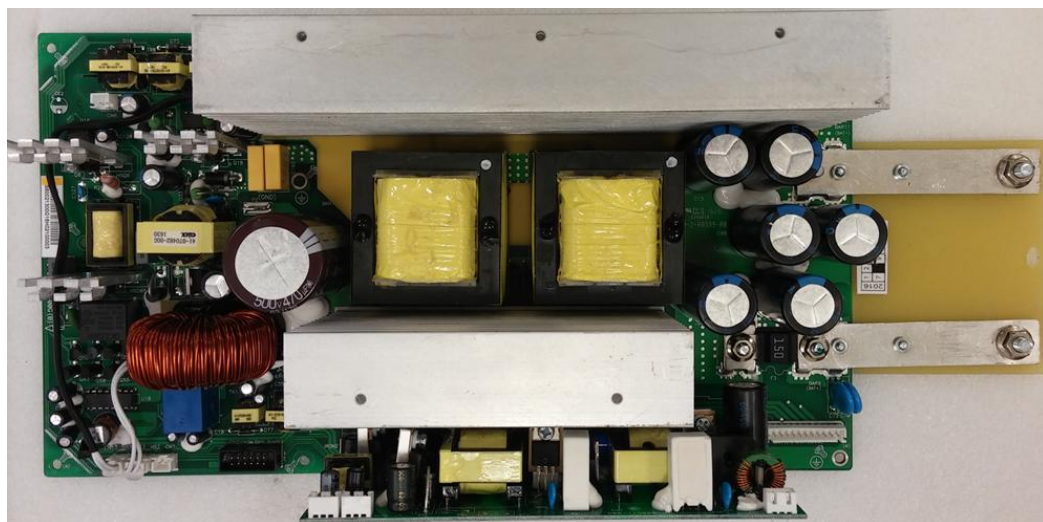


stand of case!

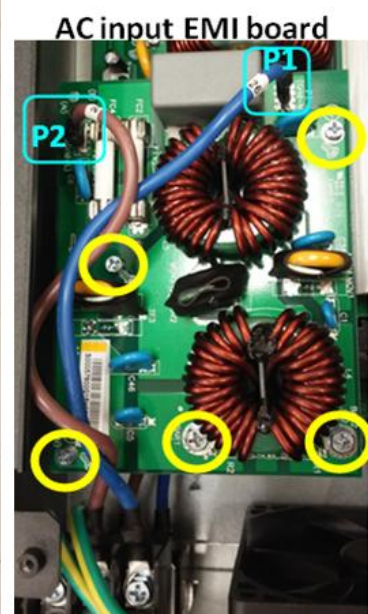
Note: When taking out the DC/DC board, you need to lift up the Fan support plate then let Battery terminals to pass through.



DC/DC board



Take off the AC input EMI board:
remove 5 pcs of screws and unplug the wires that connect to P1 and P2.

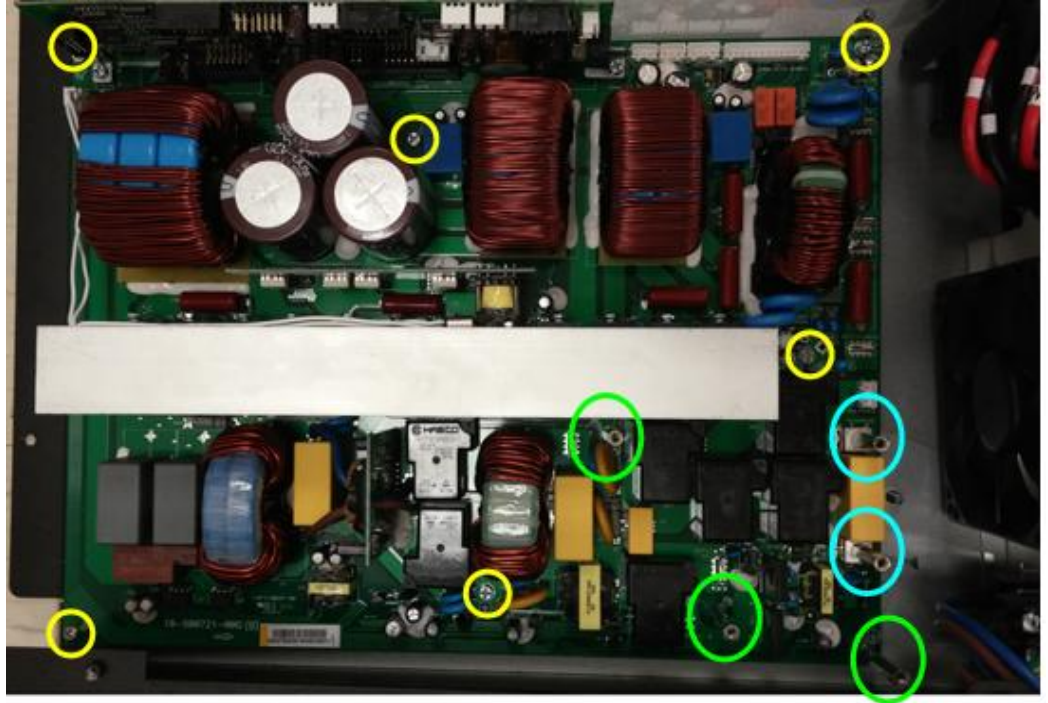


SERVICE MANUAL

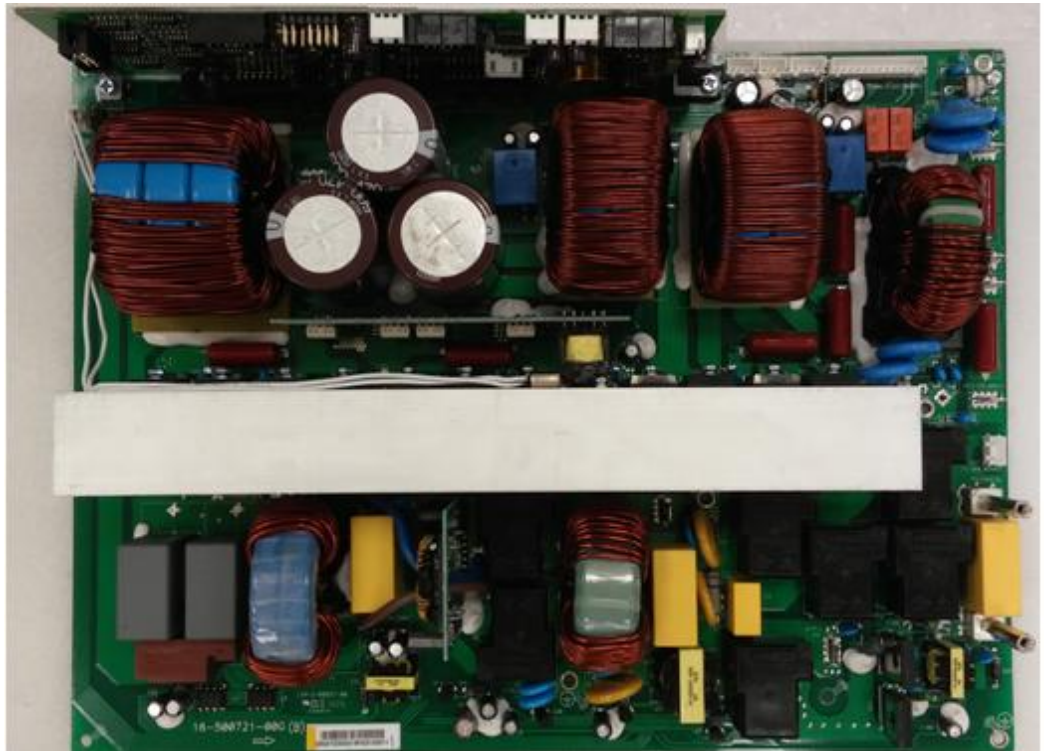
Hybrid inverter

Remove the 6 pcs of screws and 3 pcs of long copper supports and 2 pcs of short copper supports.

Note: When you attempt to take out the board, please be careful about prevent damaging the SMD components under the board! Especially prevent from SMD components be hit to damage by the stand of case!



The Main board



SERVICE MANUAL

Hybrid inverter

Remove CNTL board:
Remove the 2 pcs of screws on the main board.



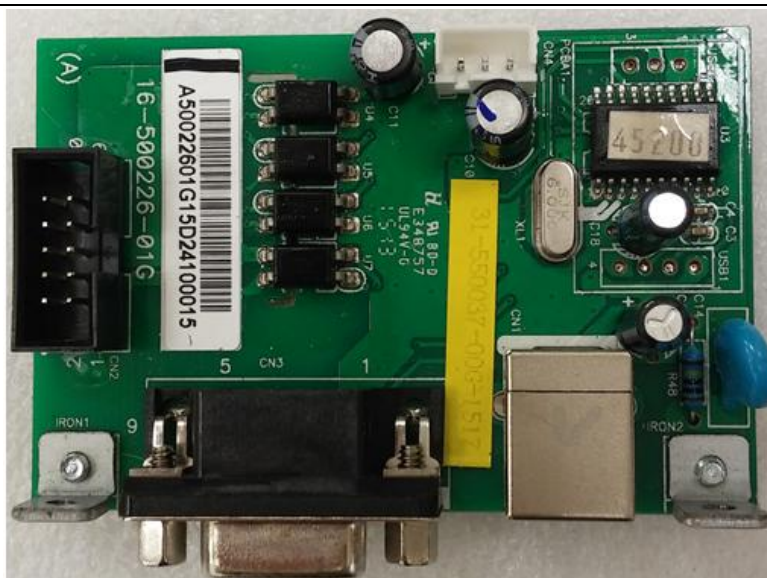
CNTL board



Remove
Communication board:
from case
Take off the 2 pcs of screws as figure.



Communication board

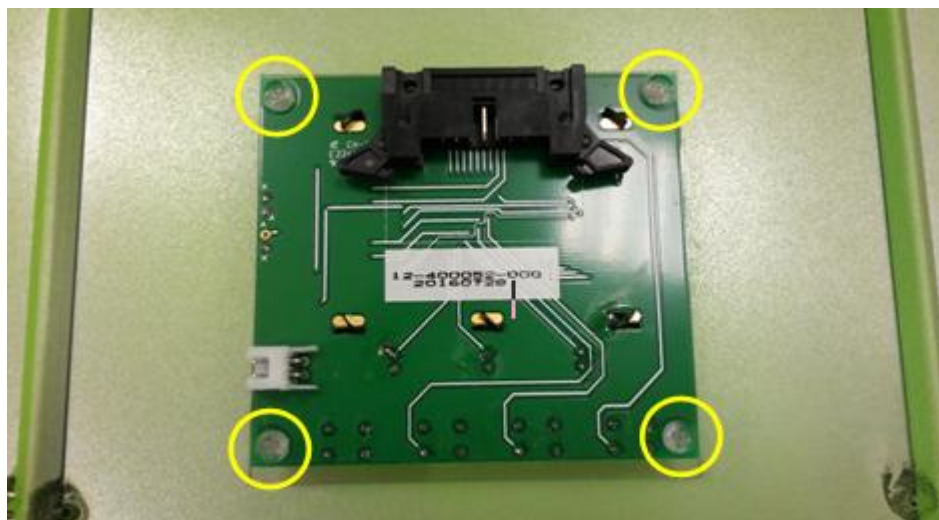


SERVICE MANUAL

Hybrid inverter

Remove LCD board
from top cover
Take off 4 pcs of
plastic screws as
figure.

**Note: Electrical
screw driver is not
proper tool!
Be careful about the
screw torque,
otherwise the
plastic screw will
break!**



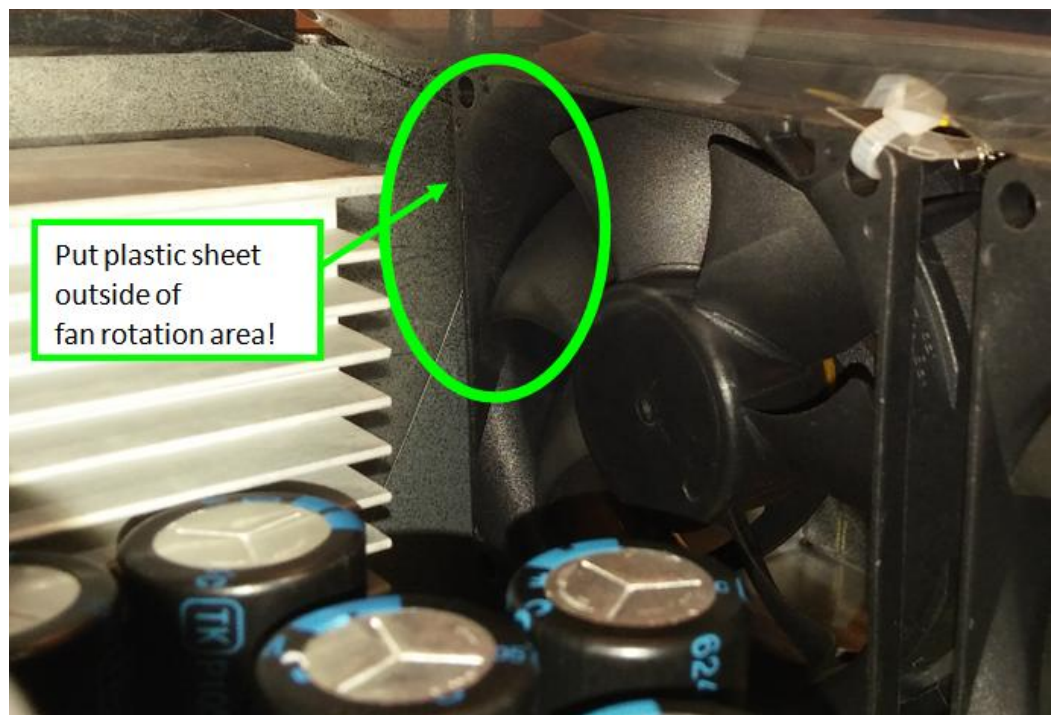
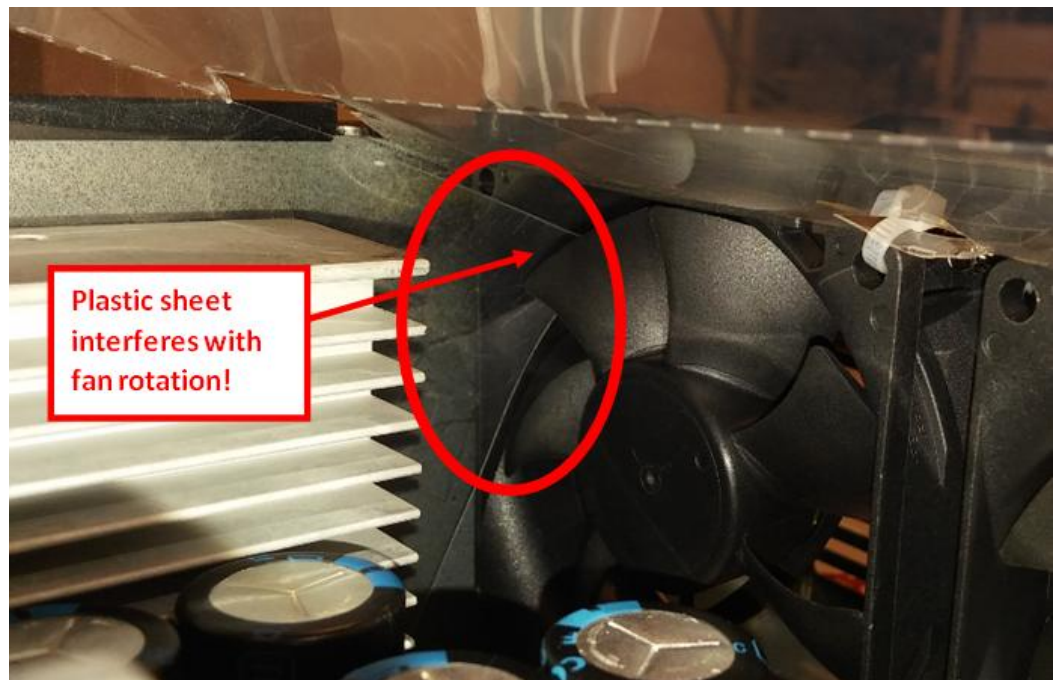
LCD board



When you replace
DC/DC board ready.

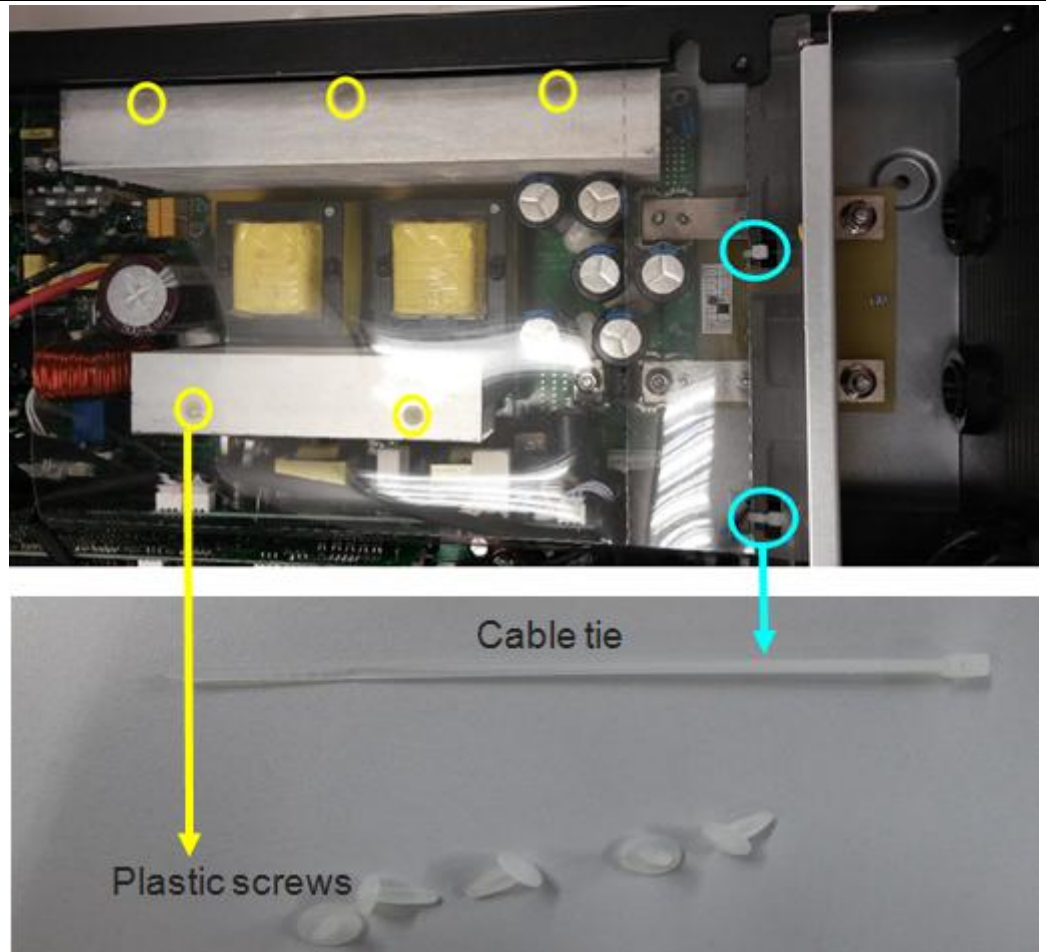
Note:

**Plastic sheet
shouldn't interfere
with fan rotation!**



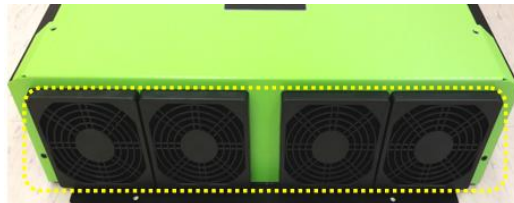
Note:

Please make sure that put the plastic sheet back and fix well. Otherwise it will affect the heat dissipation.



How to change the fan filter screen?

- (1) Pull out fan filter cover.
- (2) Take out fan filter screen and clean it.
- (3) Then close back the fan filter cover.



5. Total wiring diagram:

Note: Wrong connection of wires may cause inverter damage!

Please connect wires with care!

